

Parkview Newsletter

09.23.22

"All your children shall be taught by the Lord and great shall be the peace of your children." Isaiah 54:13

MAP Testing

Next week, **September 26-30**, is testing week at Parkview. We utilize the **MAP Growth** assessment, a trusted tool for measuring growth and achievement in the areas of K-12 **math** and **reading** among others. MAP reports allow teachers to gauge whether a student is at, below, or above grade-level in order to tailor instruction and set realistic goals for each student. The results of your student's first round of testing will be presented at parent/teacher conferences in November.



Can Your Kids Defend Their Faith?



Bring Your Bible To School day is coming up on **October 6**. We will recognize this day with a student-led, all-school assembly to celebrate our religious liberty and the privilege we have to use our Bibles every day in school. Students will also be encouraged in ways they can defend their faith. If you'd like to reinforce these ideas at home, this series of free videos from Focus on the Family may be a valuable resource to you. Just click [HERE!](#)

Fall Festival

Mark your calendars for the return of our **Fall Festival** on **Saturday, October 29**. We will have fun games, good food, and festive activities for all!



Smile.Amazon.com Users Make Parkview Happy

If you are a regular user of Amazon, you can make a big difference for Parkview by simply switching to smile.amazon.com and choosing Parkview Jr Academy as the charity of your choice. Your shopping experience will be exactly the same and a portion of your purchases will be donated to our school.



Lunch Menu

Monday—Minestrone & rolls

Tuesday—Spinach balls & rice

Wednesday—Oatmeal patties, mashed potatoes & veggies

Thursday—Haystacks

On the Calendar

October 6—Bring Your Bible to School/Religious Liberty Day

October 10—Columbus/Indigenous People's Day, NO SCHOOL

October 13—Picture Day

October 27—Teacher In-service, NOON DISMISSAL

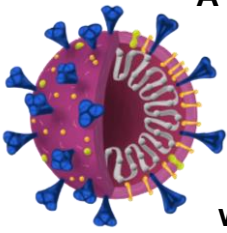
October 29—Fall Festival

Office Contact Info

315.468.0117

PJASecretary@gmail.com

COVID Screening



A reminder to the parents of our new students—if you have not yet completed and returned the COVID screening consent form, please do so ASAP if you would like to opt in to this valuable resource.

A small sample, 10% of students and staff, will be randomly sampled each week. This means your child is NOT being tested every week. The screening test is a noninvasive, buccal (cheek) swab. Performing the weekly screenings helps us catch any COVID-related illnesses early on and keep our school body healthy. If you have any questions please contact the office.

Homemade Grape Juice

Many thanks to Shin En's mother, Kai Li, for donating fresh-picked concord grapes from the Fingerlakes. Pre-K & K students used them to make homemade grape juice which they loved!



Syracuse City Bus Behavior

Unfortunately, we have experienced multiple reports from students and parents of disrespectful and rowdy behavior on the Syracuse City First Student bus. Our principal has spoken to students and the bus drivers directly to address the issues.

Students know we expect Parkview kids to represent Christ in any situation and circumstance whether at school, on the bus, or at home. In addition to discussing these situations with our students, we have assigned seats to help students make better choices while riding the bus.



Any misbehavior moving forward will result in the specific students involved being **suspended** from bus transportation for **five school days** and the responsibility falling to the parents to get their child to/from school.

Volunteer(s) Needed

Two new picnic tables have arrived to add to our nature center pavilion. These tables will create more space for outdoor learning opportunities for our students. We are looking for a volunteer or two to assemble the tables for us. If you have some free time and the necessary skills please contact the office.



Donations Welcomed

Mrs. Kaiser's class is looking for donations of gently used rain jackets **sizes 6-12** for her students to wear when working outside in nature study. If your child has recently outgrown a jacket you would like to donate, please send it in to school with him/her. Thank you.



Free Kittens



Kelly Bonin's family has all black kittens to give away. If you'd like to welcome a furry friend into your home contact Kelly at 315-897-0647.

PE/Recess Restrictions

If your child has any activity restrictions for participating in gym activities whether it be during PE or recess times, please send in a note **signed** either by the **parent** or **physician**. Otherwise, we will not be able to modify their play during these times.



Sicknesses

We kindly ask you to keep your child home if he/she is experiencing fever, chills, cough, difficulty breathing, body aches, sore throat, and/or loss of taste or smell. Children should remain home until they have received a **negative COVID test result and have been fever-free for 24 hours**. If coughing and/or sneezing persist, we ask that they wear a mask while at school.



Absent or Sick Child/Early Pick-Up

If your child will be absent for the day, please call the office **before 9am** to inform us of the reason for the absence. If you need to arrange an early pick-up, please call the office no later than the morning of to notify of **medical appointments** and at least an hour in advance (if able) in the event of an **emergency**.

Eighth Grade Snack Menu

- Kind Granola Bars--\$1.00
- Goldfish--\$0.75
- Pop Chips--\$1.00
- Chex Mix--\$1.00
- Gummies (gelatin free)--\$0.75
- Juice--\$0.75
- Popsicles (**Friday only**)--\$1.00



After-School Care/Late Pick-Up

Program hours: **M-Th 3:15-5:30pm** and **F noon-3:00pm**.

Fee: **\$5/hour per child** and **\$1.25/quarter hour paid in advance, CASH only. No exceptions.**

An initial deposit of **\$60/child** must be paid the Friday prior to a student beginning after care. Any unused funds will roll over. **Each Friday you must bank up to \$60/child to allow him/her to participate in after care services the following week.**



Parents who have not picked up their child(ren) by **3:20pm M-Th** or **12:05pm on Friday** will accrue late pick up fees at the rate of **\$1/min**, added to your monthly statement.

If you are not able to pick your child up promptly at dismissal times, we encourage you to utilize this service. By paying in advance, the fee is \$5/hr. If you are late, but haven't paid in advance the fee is \$1 PER MINUTE which adds up quickly.



**Parkview exists to empower students to think deeply,
Serve humbly and trust God wholeheartedly.**